



MAYNARDVILLE CLASSIC 56



MAYNARDVILLE CLASSIC 56

Model number: 22MAC16562AH20

2 beds • 2 baths • 896 sq.ft. • 16' width • 56' depth

Our home building facilities invest in continuous product and process improvements. Plans, dimensions, features, materials, specifications and availability are subject to change without notice or obligation. Renderings and floor plans are representative likenesses of our homes and may differ from the actual homes. We invite you to tour a Home Center near you and inspect the highest value in quality housing available or call (502) 933-2900 to speak with a Home Consultant. Copyright 2017, CMH. All rights reserved.

<https://www.claytonhomesoflouisville.com>

**CLAYTON HOMES-
LOUISVILLE**

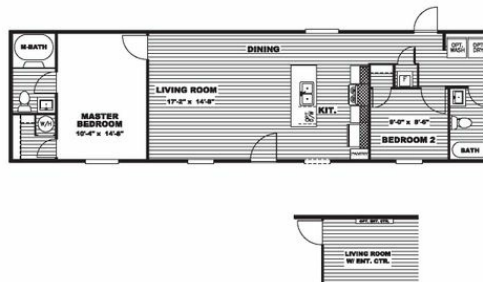
12200 DIXIE HWY
LOUISVILLE, KY 40272

Monday - Thursday: 9am to 6pm
Friday: 9am to 6pm
Saturday: 9am to 5pm
Sunday: Closed

(502) 933-2900



MAYNARDVILLE CLASSIC 56



Model # MAC16562A
Series #
7251 G1
16' x 56' MAC

MAYNARDVILLE CLASSIC 56 Model number: 22MAC16562AH20

2 beds • 2 baths • 896 sq.ft. • 16' width • 56' depth

Our home building facilities invest in continuous product and process improvements. Plans, dimensions, features, materials, specifications and availability are subject to change without notice or obligation. Renderings and floor plans are representative likenesses of our homes and may differ from the actual homes. We invite you to tour a Home Center near you and inspect the highest value in quality housing available or call (502) 933-2900 to speak with a Home Consultant. Copyright 2017, CMH. All rights reserved.

<https://www.claytonhomesoflouisville.com>

CLAYTON HOMES- LOUISVILLE

12200 DIXIE HWY
LOUISVILLE, KY 40272

Monday - Thursday: 9am to 6pm
Friday: 9am to 6pm
Saturday: 9am to 5pm
Sunday: Closed

(502) 933-2900